

DuofixBasic element for wall-hung WC with UP182 concealed cistern

Year of manufacture 2009-

458.160.00.1

458.161.21.1

Model name:

Dimension / Design:

UP182

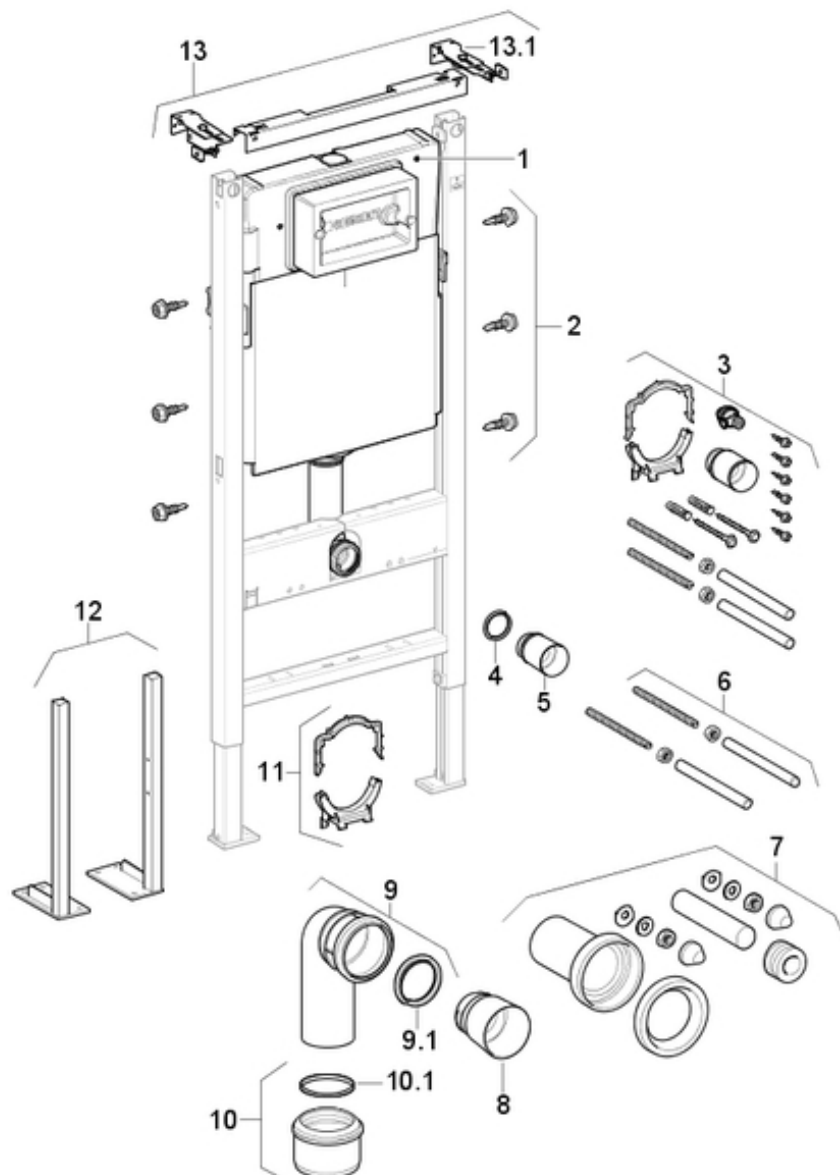
-

Assembly group:

PA number:

-

-



Pos.	Description	Article no.	Comment
1	UP182 concealed cistern, front actuation		> more spare parts
2	SCREW 5.5X19	111.892.00.1	Multipack
3	Mounting set DF-B UP100/UP182	242.272.00.1	
4	o-ring for flushpipe concealed cistern, dia. 50mm	362.771.00.1	
5	Protection plug for socket	362.796.92.1	
6	Threaded nut & cover	240.189.00.1	
7	WC collar set		> more spare parts
7	HDPE outlet connection set, length = 18cm, dia. 90mm	152.426.46.1	
8	Protection cap for WC pan, dia. 90 mm	366.820.92.1	
9	Outlet bend for WC 90°, dia 90mm for Duofix element	366.061.16.1	
9.1	Sleeve D90 EPDM	387.282.00.1	
10	Ring seal adapter socket, dia. 90 x 110mm	367.928.16.1	
10.1	Sleeve D90 EPDM	387.282.00.1	
11	Bracket	240.401.00.1	
12	Duofix feet with large foot plate	111.849.00.1	
13	DuofixBasic wall fastening + crossbar	111.813.00.1	
13.1	DuofixBasic, wall, anchor	111.839.00.1	

> Deltaline actuator plates, front actuation