



## Usa dus cu profil cromat, transparent

**Brand:** KRONER

**Model:** Hesiana K037  
( 90x90x3)cm  
(100x80x3)cm  
(120x80x3)cm



### **INSTRUCTIUNI DE MONTAJ**



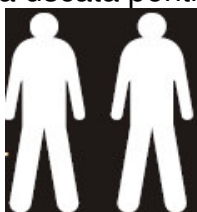
Revizia nr. 0 / mai 2009

**K-037**



### **UNELTE NECESARE (NU SUNT IN FURNITURA)**

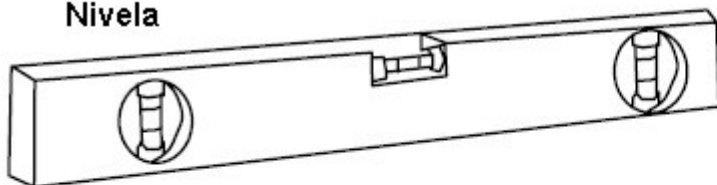
Atunci cand sunteti gata sa incepeti montajul, asigurati-va ca aveti la indemana uneltele urmatoare, spatiu suficient si o suprafata uscata pentru asamblare.



Pentru montaj, sunt necesari 2 oameni.

**Nota:** desi aceste instructiuni sunt complete, se recomanda ca montajul sa se efectueze de instalatori calificati.

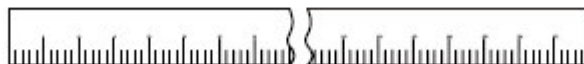
**Nivela**



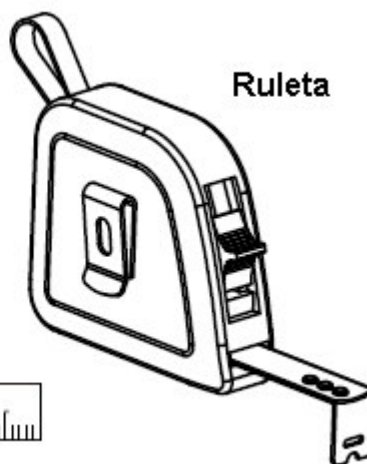
**Creion**



**Rigla**



**Ruleta**



---

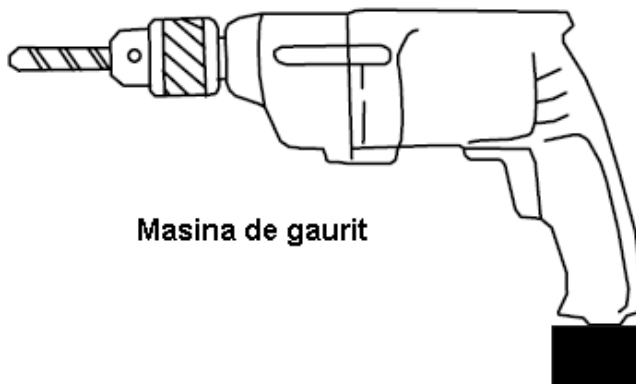
**Burghiu 3mm**



**Burghiu 6mm**



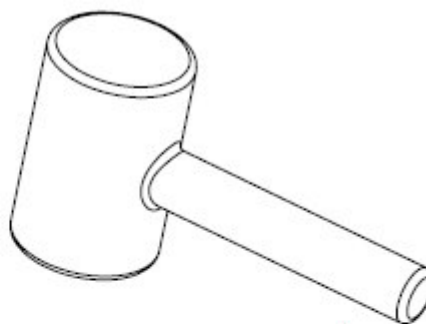
**Cap cruce pentru masina de gaurit**



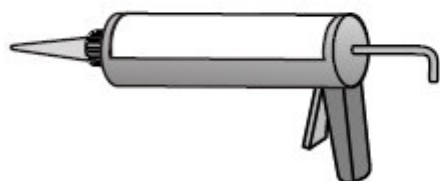
**Masina de gaurit**



**Surubelnira cruce magnetica**



**Ciocan de cauciuc**



**Silicon de etansare**

## **INAINTE DE MONTAJ & OBSERVATII IMPORTANTE**

Asigurati-va ca usa se va instala pe o suprafata orizontala, la un perete vertical

Nota: Fixarea se va face cu accesoriile din furnitura si numai pe un perete solid.

Peretii din plastic sau alt material necesita sisteme speciale de fixare.

Manevrati cu atentie geamul, evitati loviturile sau greutatile puse pe suprafata acestuia sau pe margine.

Gauriti peretele cu atentie, pentru a nu sparge eventuale conducte sau cabluri electrice.

## **INSTRUCTIUNI DE INTRETINERE**




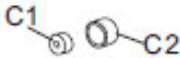




Aveti grija la partea mobila, asigurati-va ca nu este niciun obstacol care sa impiedice miscarea panoului.

Pentru curatatea sticlei, folositi sapun si apa. Numai in caz de necesitate se vor folosi solutii speciale pentru curatat sticla.

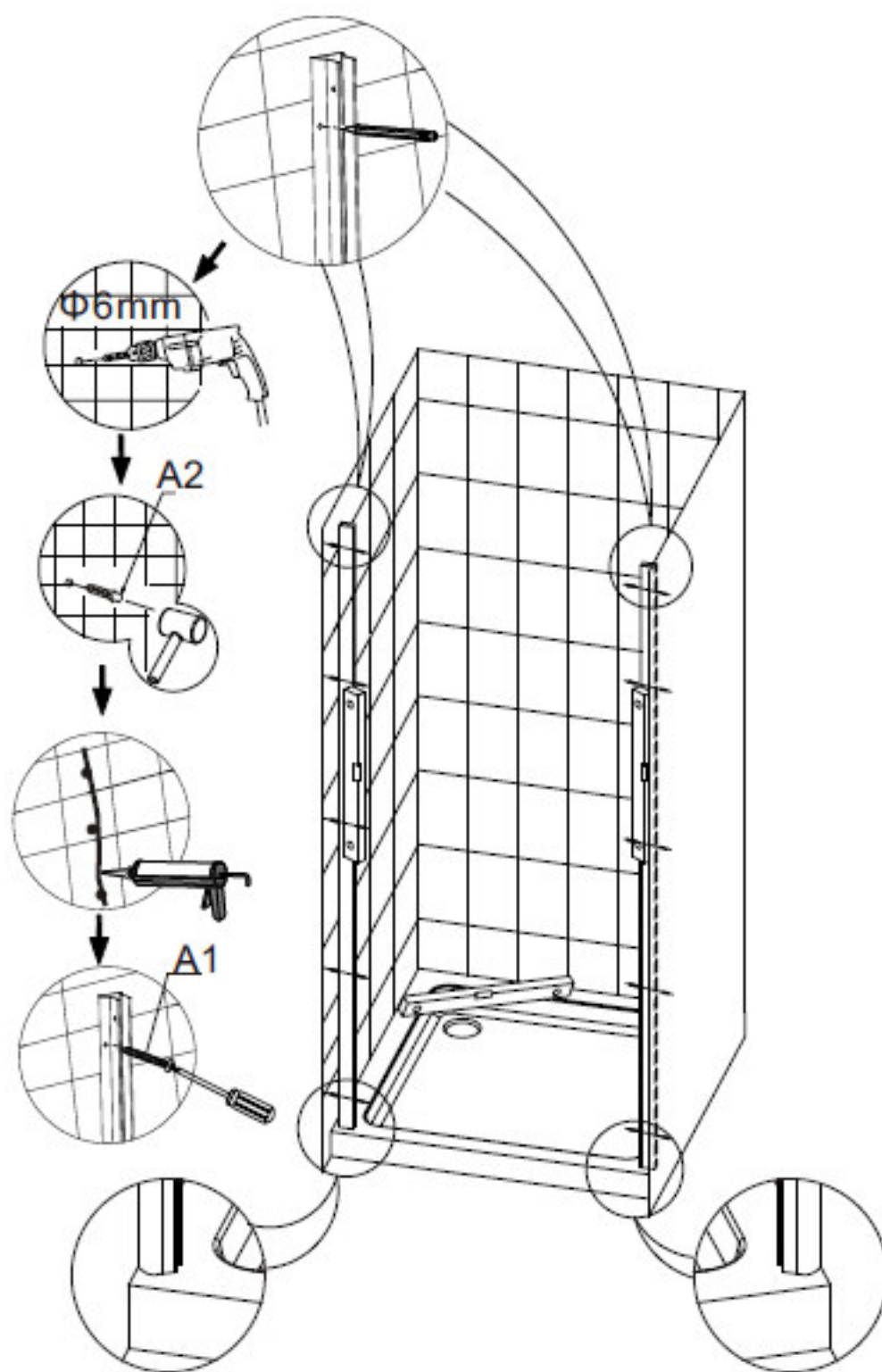
In cazul in care va aflati intr-o zona cu apa dura, se pot forma pe sticla depozite de calcar. Daca acestea sunt neglijate, isi vor mari suprafata si vor fi mai greu de curatat. Curatati usa de dus in mod regulat.

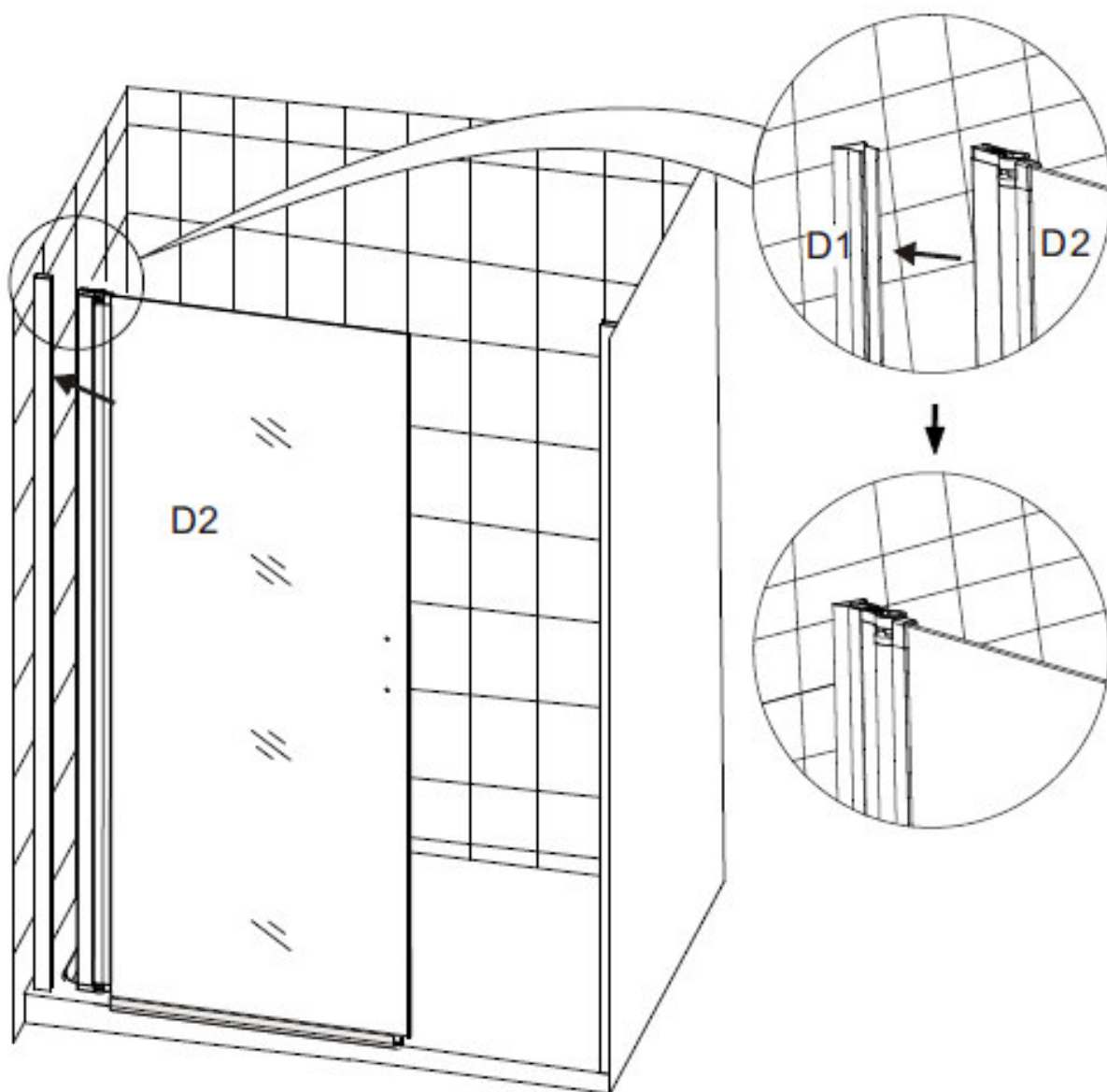


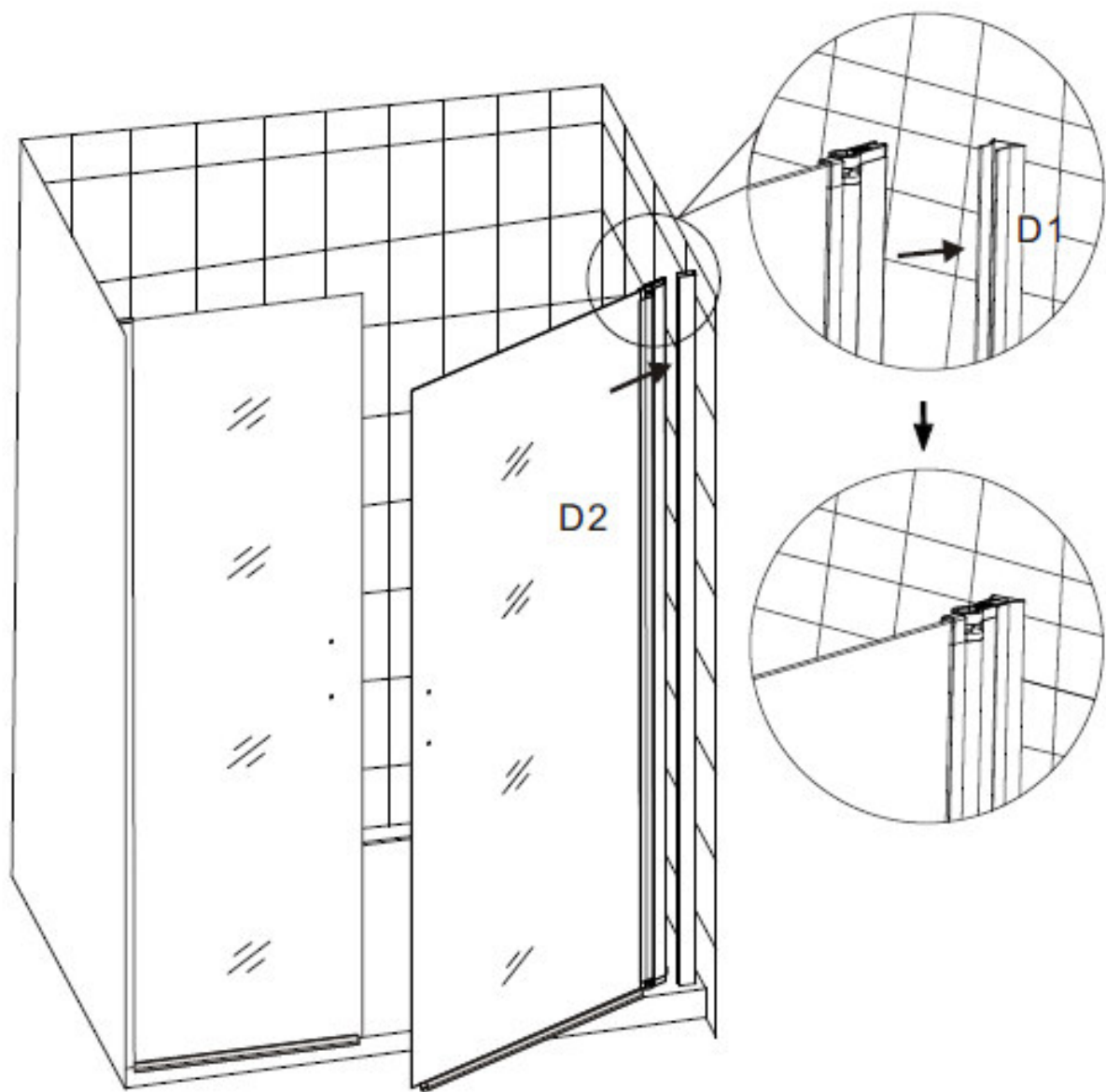
## PIESE DE SCHIMB

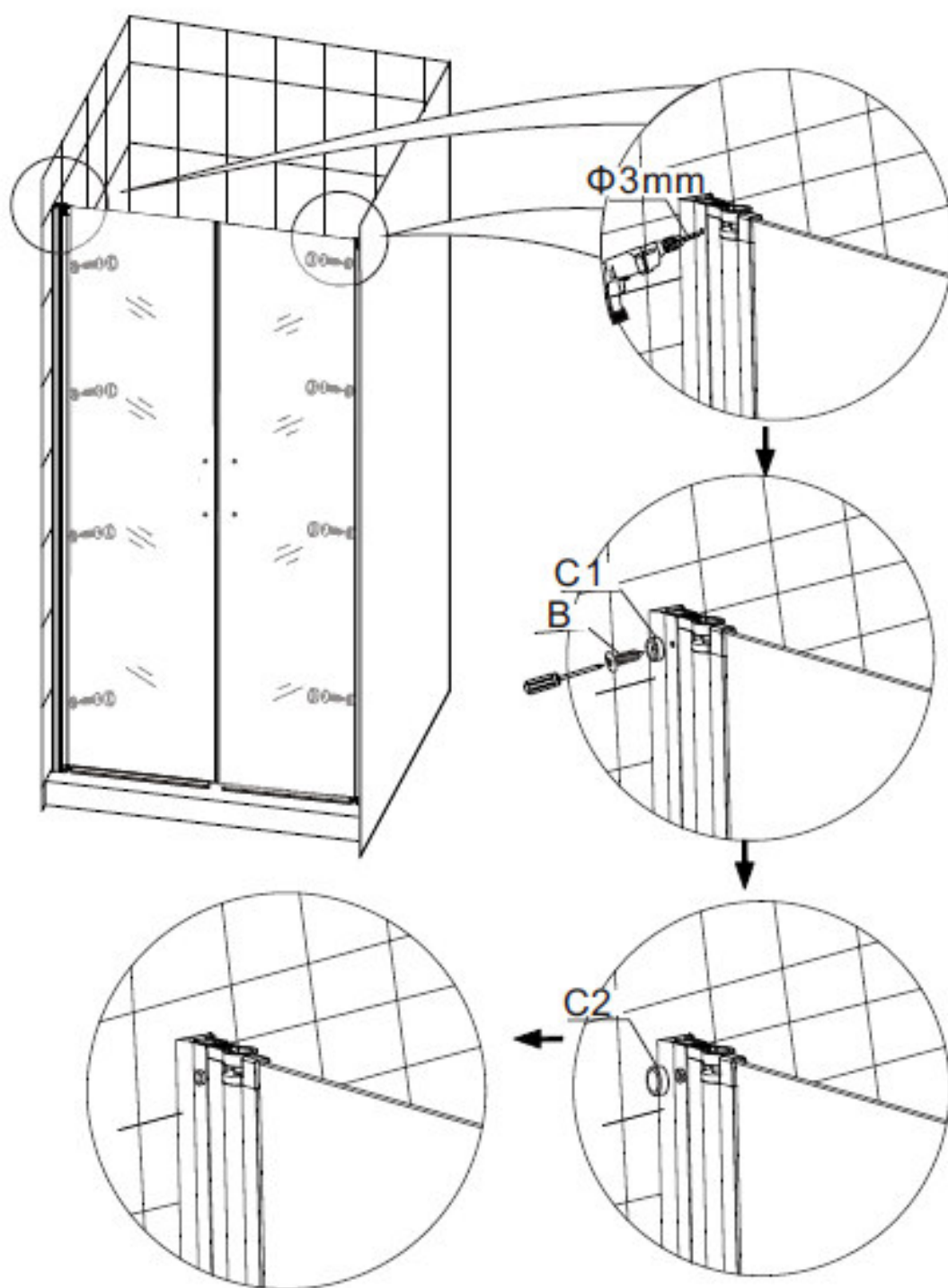
Simbol	Descriere	Schita	Cantitate
A1	ST4X25mm		10
A2	Diblu		10
B	ST4X12mm		8
C	Capac		8
D1	Profil la perete		2
D2	Usa dus pivot		2
E1	Garnitura magnetica		2
F1	Maner		2

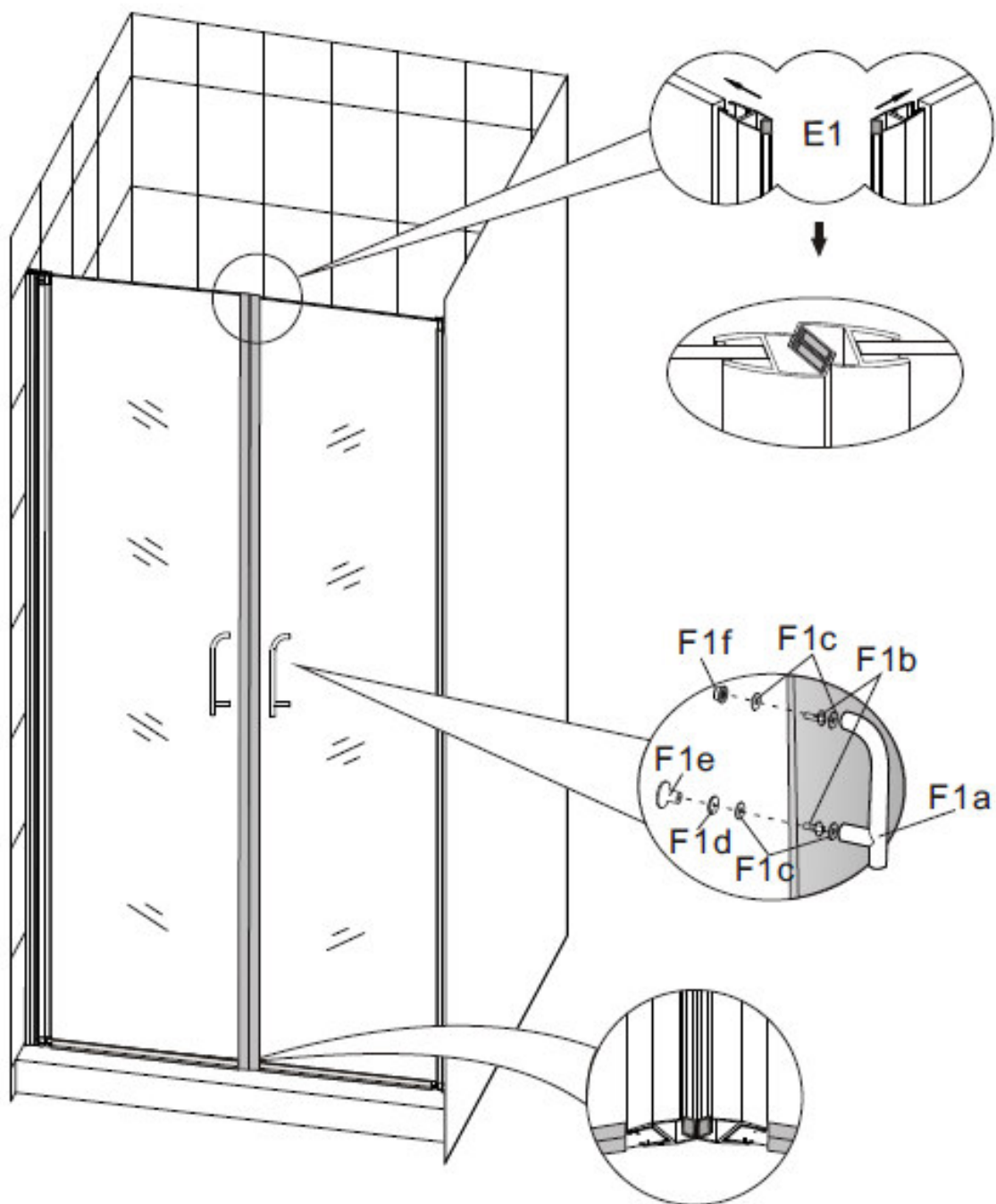
## INSTRUCTIUNI MONTAJ

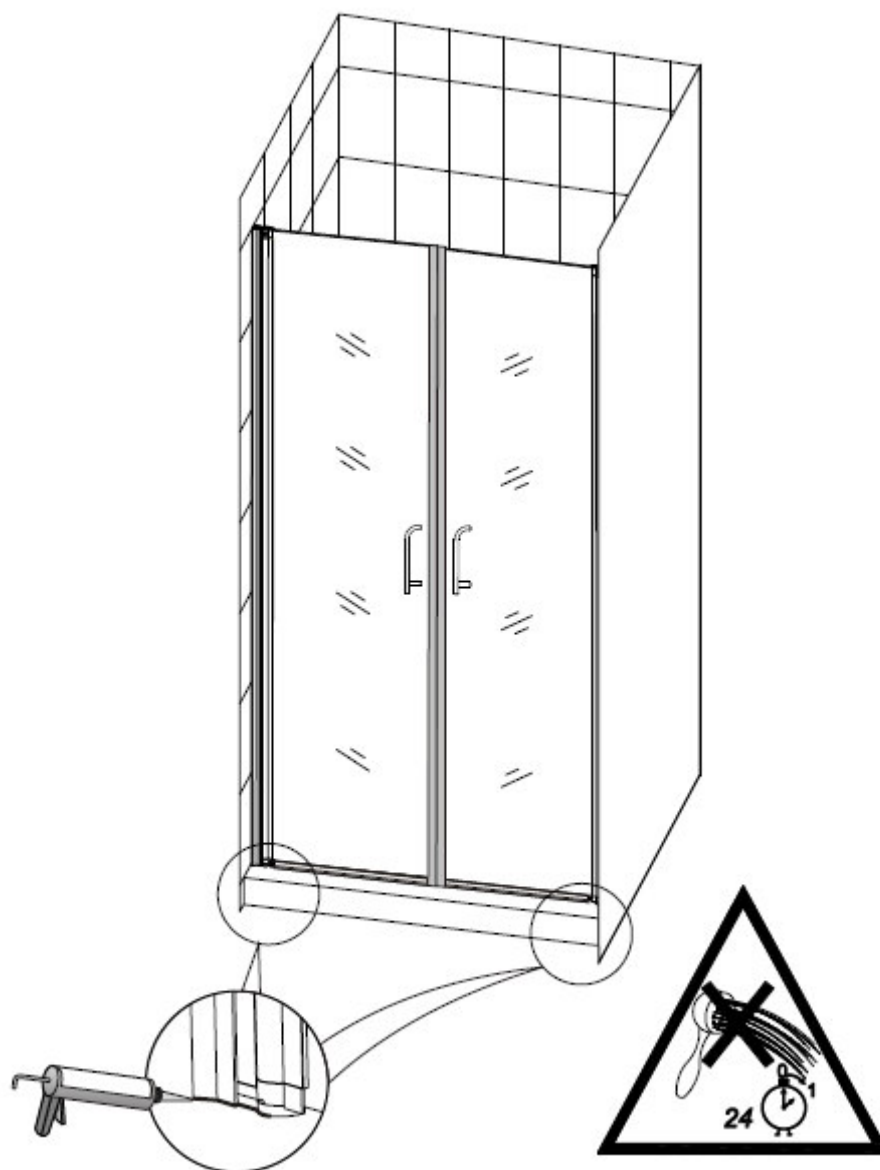












Colectivul de redactare a cartii tehnice:

Traducere:

**Ing. Violeta POPESCU**

Tehnoredactare:

**Ing. Violeta POPESCU**