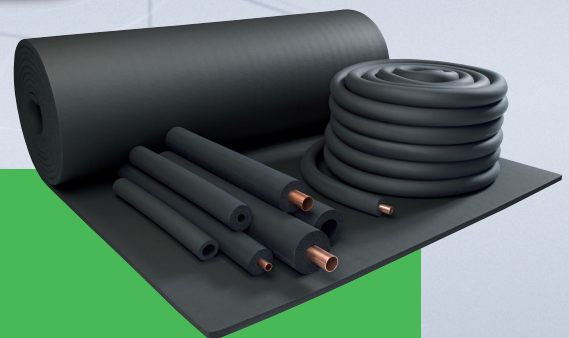




# Armaflex<sup>®</sup> ACe

The economical flexible insulation

- ▶ Condensation control
- ▶ Reduction of thermal losses
- ▶  $\lambda_{0\text{ °C}} \leq 0,036 \text{ W/(m} \cdot \text{K)}$
- ▶  $\mu \geq 7.000$



## Technical Data - Armaflex ACE

Brief description	Highly-flexible, closed-cell insulation material with high water vapour diffusion resistance and low thermal conductivity.				
Material type	Elastomeric foam based on synthetic rubber.				
Colour	black				
Material Special Information	Self-adhesive coating: pressure-sensitive adhesive coating on modified acrylate basis with mesh structure. Covered with polyethylene foil. Traces of silicon can be found on the protection paper/foil used to protect self-adhesive closures.				
Applications	Insulation / protection of pipes, air ducts, vessels (incl. elbows, fittings, flanges etc.) of air-conditioning / refrigeration and process equipment as well as heating and plumbing lines to prevent condensation and save energy.				
Special Features	Self-adhesive sheets with mesh reinforced aluminium foil available.				
Property	Value/Assessment			Super-vision <sup>*1</sup>	Special Remark
Temperature Range					
Temperature Range	max. service temperature		+ 100 °C	( + 85 °C if sheet or tape is glued to the object with all over surface coverage.)	
	min. service temperature		-50 °C		
Thermal Conductivity					
Thermal Conductivity	u <sub>r</sub>	+/-0	°C	λ=	○ Tested acc. to EN 12667 EN ISO 8497
	tubes 6-19 mm	λ ≤ 0,036	W/(m · K)	[36 + 0,1· ϑ <sub>m</sub> + 0,0008 · ϑ <sub>m</sub> <sup>2</sup> ]/1000	
	tubes 25 mm	λ ≤ 0,038	W/(m · K)	[38 + 0,1· ϑ <sub>m</sub> + 0,0008 · ϑ <sub>m</sub> <sup>2</sup> ]/1000	
	sheets 6-25 mm	λ ≤ 0,036	W/(m · K)	[36 + 0,1· ϑ <sub>m</sub> + 0,0008 · ϑ <sub>m</sub> <sup>2</sup> ]/1000	
	sheets 32-50 mm	λ ≤ 0,038	W/(m · K)	[38 + 0,1· ϑ <sub>m</sub> + 0,0008 · ϑ <sub>m</sub> <sup>2</sup> ]/1000	
Water vapour diffusion resistance					
Water vapour diffusion resistance	μ		≥	7.000	○ Tested acc. to EN 12086 and EN 13469
Fire performance					
Reaction to fire <sup>1</sup>	Euroclass			○ Classified acc. to EN 13501-1 Tested acc. to EN 13823 and EN ISO 11925-2	
	Tubes D <sub>L</sub> -s3,d0				
	Sheets, Tape D-s3,d0				
Practical Fire Behaviour	Self-extinguishing, does not drip, does not spread flames				
Other technical features					
Dimensions and tolerances	In accordance with EN 14304, table 1				
Storage & Shelf life	Self-adhesive tapes, self-adhesive sheets: 1 year				Can be stored in dry, clean rooms at normal relative humidity (50% to 70%) and ambient temperature (0 °C – 35 °C).

1. The building materials classification is valid on metal or solid, mineral surfaces.

\*1 ? : Official supervision by independent institutes and /or test authorities

? : Own in-factory quality monitoring

All data and technical information are based on results achieved under typical application conditions. Recipients of this information should, in their own interest and responsibility, clarify with us in due time whether or not the data and information apply to the intended application area. Installation instructions are available in our Armaflex installation manual. Please consult our Customer Service Center before insulating stainless steels. Armaflex 520 adhesive must be used to guarantee proper installation. For some refrigerants the discharge temperature may exceed +110 °C, please consult our Customer Service Center for further information.

# Armaflex ACE tubes



Length 2,0 m, Color black, D<sub>L</sub>-s3,d0

Pipe max. Outside-Ø [mm]	Inner Ø min/ max mm	6,0 mm insulation thickness		9,0 mm insulation thickness	
		Code	m/carton	Code	m/carton
6	7,0 - 8,5	ACE-06X006	496	ACE-09X006	352
10	11,0 - 12,5	ACE-06X010	364	ACE-09X010	266
12	13,0 - 14,5	ACE-06X012	316	ACE-09X012	234
15	16,0 - 17,5	ACE-06X015	266	ACE-09X015	192
18	19,0 - 20,5	ACE-06X018	210	ACE-09X018	166
22	21,0 - 24,5	ACE-06X022	166	ACE-09X022	136
25	26,0 - 27,5	-	-	ACE-09X025 •	108
28	29,0 - 30,5	ACE-06X028	112	ACE-09X028	98
35	36,0 - 38,0	ACE-06X035	92	ACE-09X035	76
42	43,5 - 45,5	-	-	ACE-09X042	60
48	49,5 - 51,5	-	-	ACE-09X048	50
54	55,0 - 57,0	-	-	ACE-09X054	46
60	61,5 - 63,5	-	-	ACE-09X060	36
64	65,0 - 66,5	-	-	ACE-09X064	34
76	77,0 - 79,5	-	-	ACE-09X076	26
89	90,5 - 93,0	-	-	ACE-09X089	20
108	109,5 - 113,0	-	-	ACE-09X108 •	20
114	116,0 - 120,0	-	-	ACE-09X114	20

Pipe max. Outside-Ø [mm]	Inner Ø min/ max mm	13,0 mm insulation thickness		19,0 mm insulation thickness	
		Code	m/carton	Code	m/carton
10	11,0 - 12,5	ACE-13X010	172	-	-
12	13,0 - 14,5	ACE-13X012	152	-	-
15	16,0 - 17,5	ACE-13X015	136	ACE-19X015	72
18	19,0 - 20,5	ACE-13X018	118	ACE-19X018	60
22	23,0 - 24,5	ACE-13X022	84	ACE-19X022	56
28	29,0 - 30,5	ACE-13X028	78	ACE-19X028	48
35	36,0 - 38,0	ACE-13X035	58	ACE-19X035	36
42	43,5 - 45,5	ACE-13X042	48	ACE-19X042	32
48	49,5 - 51,5	ACE-13X048	40	ACE-19X048	24
54	55,0 - 57,0	ACE-13X054	34	ACE-19X054	24
60	61,5 - 63,5	ACE-13X060	32	ACE-19X060	24
64	65,0 - 67,5	ACE-13X064	30	ACE-19X064	20
76	77,0 - 79,5	ACE-13X076	24	ACE-19X076	16
89	90,5 - 93,0	ACE-13X089	20	ACE-19X089	16
108	109,5 - 113,0	ACE-13X108	20	ACE-19X108	12
114	116,0 - 120,0	ACE-13X114	18	ACE-19X114	12
140	135,0 - 139,0	ACE-13X133	16	ACE-19X133	10
159	162,0 - 166,0	ACE-13X160	12	ACE-19X160	10

Pipe max. Outside-Ø [mm]	Inner Ø min/ max mm	25,0 mm insulation thickness			
		Code	m/carton		
22	23,0 - 24,5	ACE-25X022	36	-	-
28	29,0 - 30,5	ACE-25X028	32	-	-
35	36,0 - 38,0	ACE-25X035	24	-	-
42	43,5 - 45,5	ACE-25X042	24	-	-
48	49,5 - 51,5	ACE-25X048	20	-	-
54	55,0 - 57,0	ACE-25X054	18	-	-
60	61,5 - 63,5	ACE-25X060	18	-	-
76	77,0 - 79,5	ACE-25X076	16	-	-
89	90,5 - 93,0	ACE-25X089	12	-	-
108	109,5 - 113,0	ACE-25X108	6	-	-
114	116,0 - 120,0	ACE-25X114	6	-	-

Length tolerance for tubes

±1,5 %

Thickness tolerance

6 mm: ± 1,0 mm  
9 mm, 13 mm: ± 1,5 mm  
19 mm, 25 mm: ± 2,0 mm

• Are not on stock, delivery on request

## Armaflex ACE sheets endless



Width 1,0 m, Color black, D-s3,d0

Sheets endless			
Code	Roll length [m]	Thickness [mm]	m <sup>2</sup> /carton
ACE-06-99/E	15	6,0	15
ACE-09-99/E	10	9,0	10
ACE-13-99/E	8	13,0	8
ACE-19-99/E	6	19,0	6
ACE-25-99/E	4	25,0	4
ACE-32-99/E	3	32,0	3

Sheets endless self-adhesive			
Code	Roll length [m]	Thickness [mm]	m <sup>2</sup> /carton
ACE-06-99/EA	15	6,0	15
ACE-09-99/EA	10	9,0	10
ACE-13-99/EA	8	13,0	8
ACE-19-99/EA	6	19,0	6
ACE-25-99/EA	4	25,0	4
ACE-32-99/EA	3	32,0	3

Length tolerance for sheets	±1,5 %
Thickness tolerance for sheets	6 mm: ±1,0 mm
	9 mm - 19 mm: ±1,5 mm
	25 mm - 50 mm: ±2,0 mm

## Armaflex ACE tapes self-adhesive



Length 15,0 m, Width 50,0 mm, Thickness 3,0 mm, Color black, D-s3,d0

Code	Description	Rolls/carton
ACE-TAPE	15 m x 50 mm x 3 mm	12