

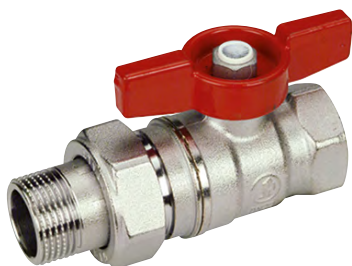
## BALL VALVES

0595EN March 2020

VALVE FOR WATER FOR HEATING/COOLING SYSTEMS  
AND NOT DANGEROUS GAS  
STANDARD PORT - R259D SERIES



**GIACOMINI**  
WATER E-MOTION



R259D

### Description

Ball valve, with female-tail piece male threaded connections.  
Standard port.

### Versions and product codes

Product code	Connections	Finishing	Handle type	Handle color
R259X003	G 1/2"F x G 1/2"M	Chrome plated brass	T-handle	Red
R259X043	G 1/2"F x G 1/2"M	Chrome plated brass	T-handle	Blue
R259X004	G 1/2"F x G 3/4"M	Chrome plated brass	T-handle	Red
R259X005	G 3/4"F x G 3/4"M	Chrome plated brass	T-handle	Red
R259X045	G 3/4"F x G 3/4"M	Chrome plated brass	T-handle	Blue
R259X006	G 3/4"F x G 1"M	Chrome plated brass	T-handle	Red
R259X007	G 1"F x G 1"M	Chrome plated brass	T-handle	Red
R259X008	G 1"F x G 1-1/4"M	Chrome plated brass	T-handle	Red
R259X009	G 1-1/4"F x G 1-1/4"M	Chrome plated brass	T-handle	Red
R259Y003	G 1/2"F x G 1/2"M	Brass	T-handle	Red
R259Y005	G 3/4"F x G 3/4"M	Brass	T-handle	Red
R259Y006	G 3/4"F x G 1"M	Brass	T-handle	Red
R259Y007	G 1"F x G 1"M	Brass	T-handle	Red
R259Y008	G 1"F x G 1-1/4"M	Brass	T-handle	Red
R259Y009	G 1-1/4"F x G 1-1/4"M	Brass	T-handle	Red
R259Y025	G 3/4"F x G 3/4"M	Brass	T-handle	Blue
R259Y026	G 3/4"F x G 1"M	Brass	T-handle	Blue
R259Y027	G 1"F x G 1"M	Brass	T-handle	Blue
R259Y029	G 1-1/4"F x G 1-1/4"M	Brass	T-handle	Blue
R259ZX003	Rc 1/2" x R 1/2"	Chrome plated brass	T-handle	Red
R259ZX005	Rc 3/4" x R 3/4"	Chrome plated brass	T-handle	Red
R259ZX007	Rc 1" x R 1"	Chrome plated brass	T-handle	Red
R259ZX009	Rc 1-1/4" x R 1-1/4"	Chrome plated brass	T-handle	Red

### Technical data

#### Main features and materials

- Suitable for water for heating/cooling systems and not dangerous gas
- Standard port
- Valve made of UNI EN 12165 CW617N rough or chrome plated brass
- Stem with double O-Ring
- Nut with anti-corrosion coating, with guarantee seal and hologram
- Aluminium T-handle, red or blue painted

#### Field of applications

- Min. working temperature: -20 °C with 50 % glycol solutions
- Max. working temperature with dry saturated steam:  
185 °C with 1,05 MPa (10,5 bar)
- Max. working pressure at 20 °C with water and not dangerous gas:  
4,2 MPa (42 bar) for 1/2"F, 3/4"F  
3,5 MPa (35 bar) for 1"F, 1-1/4"F

## BALL VALVES

0595EN March 2020

VALVE FOR WATER FOR HEATING/COOLING SYSTEMS  
AND NOT DANGEROUS GAS  
STANDARD PORT - R259D SERIES

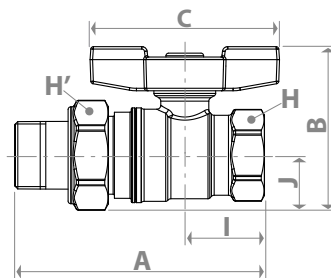


**GIACOMINI**  
WATER E-MOTION



### Dimensions and Kv

Product code	DN	A [mm]	I [mm]	B [mm]	J [mm]	C [mm]	H [mm]	H' [mm]	Kv
R259X003	14	86	27	53	17	63	wr.25	wr.30	10,2
R259X043	14	86	27	53	17	63	wr.25	wr.30	10,2
R259X004	14	87	27	57	21	63	wr.25	wr.38	10,2
R259X005	18	96	31	63	21	73	wr.32	wr.38	18,5
R259X045	18	96	31	63	21	73	wr.32	wr.38	18,5
R259X006	18	101	31	67	26	73	wr.32	wr.46	18,5
R259X007	22	110	38	72	26	73	wr.39	wr.46	36,3
R259X008	22	114	38	76	30	73	wr.39	wr.53	36,3
R259X009	28	125	42	80	30	73	wr.48	wr.53	73,5
R259Y003	14	86	27	53	17	63	wr.25	wr.30	10,2
R259Y005	18	96	31	63	21	73	wr.32	wr.38	18,5
R259Y006	18	101	31	67	26	73	wr.32	wr.46	18,5
R259Y007	22	110	38	72	26	73	wr.39	wr.46	36,3
R259Y008	22	114	38	76	30	73	wr.39	wr.53	36,3
R259Y009	28	125	42	80	30	73	wr.48	wr.53	73,5
R259Y025	18	96	31	63	21	73	wr.32	wr.38	18,5
R259Y026	18	101	31	67	26	73	wr.32	wr.46	18,5
R259Y027	22	110	38	72	26	73	wr.39	wr.46	36,3
R259Y029	28	125	42	80	30	73	wr.48	wr.53	73,5
R259ZX003	14	90	27	53	17	63	wr.25	wr.30	10,2
R259ZX005	18	100	31	63	21	73	wr.32	wr.38	18,5
R259ZX007	22	114	38	72	26	73	wr.39	wr.46	36,3
R259ZX009	28	129	42	80	30	73	wr.48	wr.53	73,5



### Product specifications

#### R259D

Ball valve, with female-tail piece male threaded connections. Suitable for water for heating/cooling systems and not dangerous gas. Valve made of UNI EN 12165 CW617N rough or chrome plated brass. Standard port. Aluminium T-handle, red or blue painted. Stem with double O-Ring. Nut with anti-corrosion coating, with guarantee seal and hologram. Min. working temperature: -20 °C with 50 % glycol solutions. Max. working temperature with dry saturated steam: 185 °C with 1,05 MPa (10,5 bar). Max. working pressure at 20 °C with water and not dangerous gas: 4,2 MPa (42 bar) for 1/2" F, 3/4" F; 3,5 MPa (35 bar) for 1" F, 1-1/4" F.

#### Additional information

For more information, go to [www.giacomini.com](http://www.giacomini.com) or contact our technical assistance service: ☎ +39 0322 923372 📠 +39 0322 923255 ✉ [consulenza.prodotti@giacomini.com](mailto:consulenza.prodotti@giacomini.com)

This document provides only general indications. Giacomini S.p.A. may change at any time, without notice and for technical or commercial reasons, the items included herewith.

The information included in this technical sheet do not exempt the user from strictly complying with the rules and good practice standards in force.

Giacomini S.p.A. Via per Alzo, 39 - 28017 San Maurizio d'Opaglio (NO) Italy